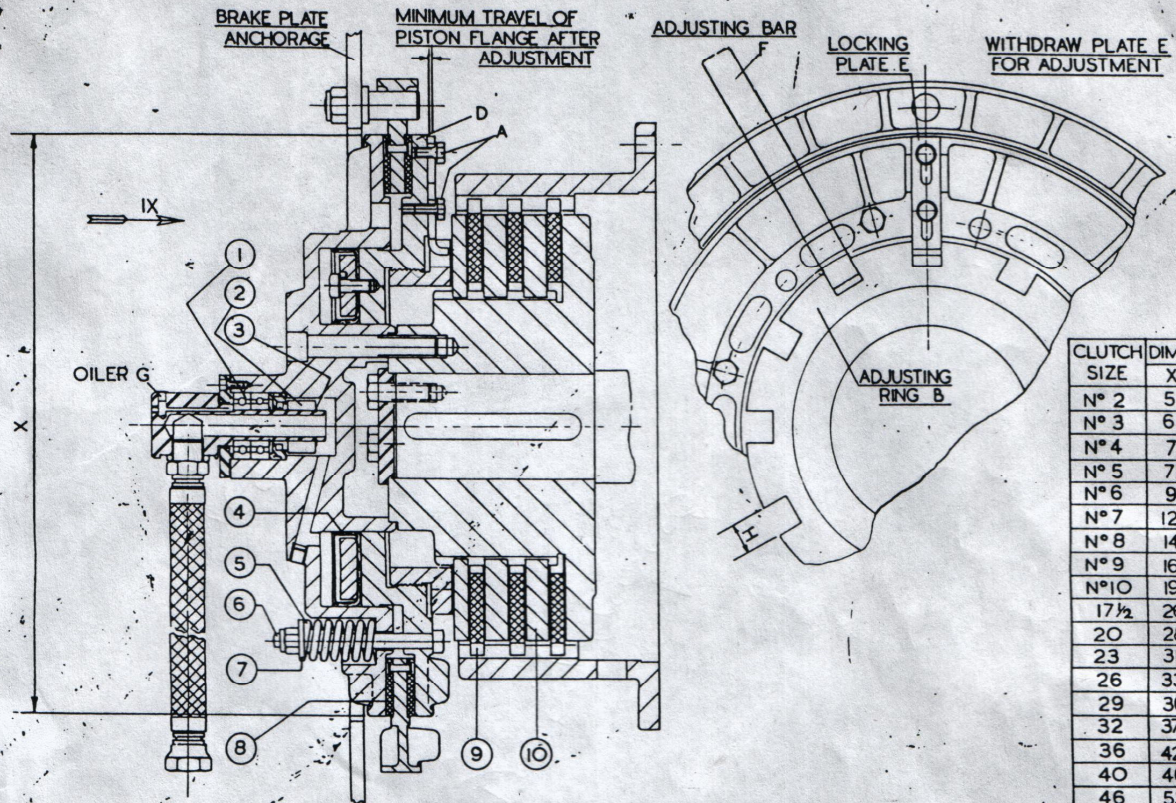


THE Taylor

PNEUMATIC CLUTCH WITH AUTOMATIC BRAKE
PATENT N° 525124/704326/1262640



CLUTCH SIZE	DIMENSION	
	X"	Y"
N° 2	5 1/4	1/4
N° 3	6 1/4	5/16
N° 4	7	1/2
N° 5	7 3/4	3/16
N° 6	9 1/2	9/32
N° 7	12 3/4	1/2
N° 8	14 1/2	9/32
N° 9	16 3/4	13/32
N° 10	19 3/4	1/2
17 1/2	26 1/4	1/16
20	28	5/8
23	31 1/4	5/8
26	33	5/8
29	36	5/8
32	37 3/4	7/8
36	42 1/4	13/16
40	46	3/4
46	53	3/4

ADJUSTMENT INSTRUCTIONS

PART N°	DESCRIPTION	N° OFF PER SET
1	DEEP GROOVE JOURNAL BEARING	
2	ROTARY SEAL & SEAT	
3	EXTERNAL TYPE CIRCLIP	
4	CYLINDER PACKING	
5	BRAKE ACTUATING SPRING	
6	SPRING RETAINING BOLT	
7	SPRING CAP	
8	FABRIC BRAKE DISC & RIVETS	
9	FABRIC CLUTCH DISC	
10	H.D.I INNER DISC	

THIS DOES NOT INCREASE DRIVING POWER BUT IS TO TAKE UP EXCESSIVE WEAR ON CLUTCH AND BRAKE DISCS AND MAINTAIN AN EFFECTIVE WORKING CLEARANCE, INDICATED BY A TRAVEL OF 3/32 TO 1/8" ON PISTON 'D' WHEN ENGAGING AND DISENGAGING. ADJUSTMENT IS ONLY REQUIRED WHEN THIS TRAVEL REACHES 3/16" AND IS EFFECTED AS UNDER AND MUST ONLY BE CARRIED OUT WITH THE CLUTCH DISENGAGED AND THE POWER SOURCE SWITCHED OFF.

SLACKEN OFF SCREW 'A' AND WITHDRAW LOCKING PLATE 'E' FROM ITS ENGAGEMENT IN SLOT 'H' IN ADJUSTING RING 'B'. NIP PLATE 'E' IN THIS POSITION CLEAR OF RING 'B'.

WITH ADJUSTMENT BAR 'F' INSERTED INTO ONE OF THE SLOTS 'H' TURN ADJUSTING RING 'B' CLOCKWISE, (LOOKING IN DIRECTION OF ARROW IX) UNTIL CLUTCH PLATES ARE CLAMPED TOGETHER.

NOW TURN ADJUSTING RING 'B' ONE FULL REVOLUTION ANTICLOCKWISE, THIS WILL GIVE THE CORRECT WORKING CLEARANCE.

RE-INSERT LOCKING PLATE 'E' INTO NEAREST SLOT 'H' IN ADJUSTING RING 'B' AND TIGHTEN UP SCREW 'A'.

TO ADJUST SPRING PRESSURE ON BRAKE DISCS - SLACKEN NUTS ON BRAKE ACTUATING SPRINGS UNTIL THEY ATTAIN FREE LENGTH. NOW TIGHTEN UNTIL SPRINGS ARE JUST BEING HELD. SCREW UP EACH NUT TO THE SPECIFIED COMPRESSION DIMENSION 'Y' GIVEN ON THE LIST ABOVE.

CORRECT ADJUSTMENT ENSURES QUICK POSITIVE ACTION DURING CONTINUOUS OPERATION, GIVES VASTLY INCREASED LIFE TO CLUTCH AND BRAKE DISCS AND REDUCES THE AMOUNT OF COMPRESSED AIR USED TO A MINIMUM.

LUBRICATION CHARGE OILER G ONCE PER WEEK FOR EFFICIENT SERVICE.

TO IDENTIFY CLUTCH SIZE WHEN ORDERING SPARES PLEASE SPECIFY DIMENSION 'X'. WHEN ORDERING PARTS NINE AND TEN STATE ORIGINAL THICKNESS OF DISCS MEASURED ACROSS WIDTH OF TEETH.



TAYLOR INDUSTRIAL CLUTCH SUPPLIES LTD.
(formerly Rochdale Industrial Clutch Supplies Ltd.)

Unit 5 Meek Street, off Higginshaw Lane, Royton, Oldham OL2 6HL.
Tel/Fax: 0161 626 8819